



960

Series

Rugged, Modular,
and Hatchable Racks



COTS & MOTS
HATCHABLE
SHOCK & VIBE QUALIFIED
STANDARD EIA RACK-MOUNT



MIL-DTL-901 SHOCK
MIL-STD-167 VIBRATION
MIL STD 461 EMI/RFI
MIL-STD 810G ENVIRONMENTAL



300 lbs. Payload As Open rack
450-1,500 lbs. with Side/Rear Panels, Center
Frame Support & Isolation System

Infinite adjustment of electronic equipment positioning using standard EIA hole spacing via front mounting rails

Optional EIA rails at the rear and additional intermediate EIA rails with flexible front-to-back positioning available

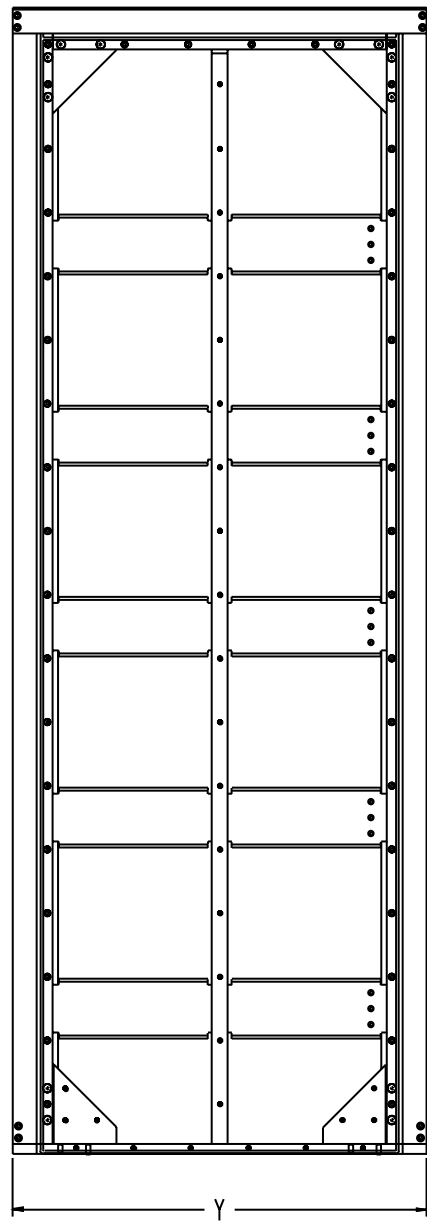
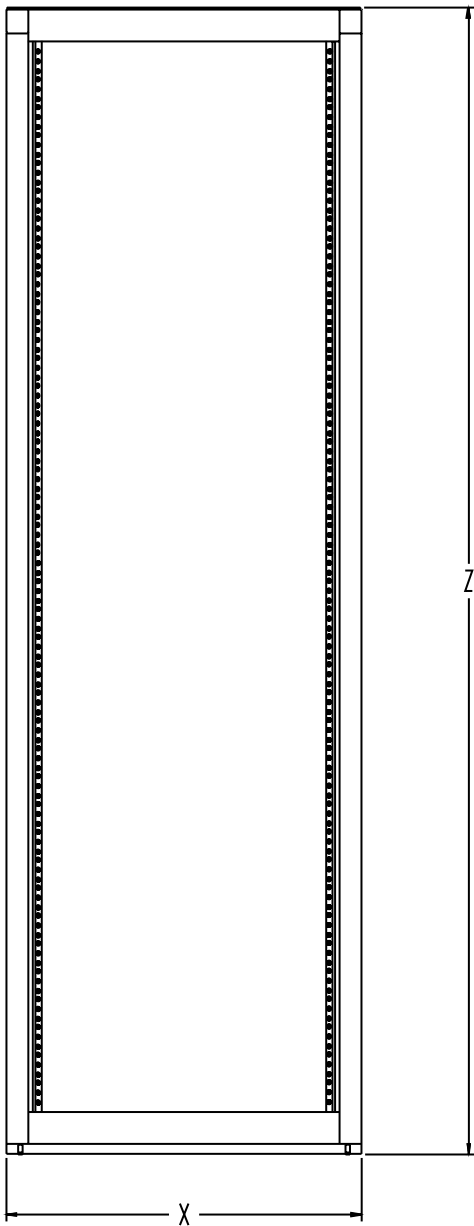
Designed to meet any height, width or depth variation

Optional front and rear doors with shock pins

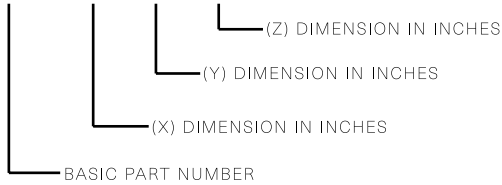
Razorbacks and side/rear panels

Single bay and multi-bay configuration

Adaptable to use external or internal isolation systems specifically tuned for the payload, deck frequency and sway space required for the application



P960-XX-YY-ZZ



Prefix	Width	DIM (IN)	Depth	DIM (IN)	Height (U)	DIM(IN)
P960	XX	(X)	YY	(Y)	ZZ	(Z)
	A	22.31	26	26.00	08	19.50
	B	27.31	28	28.00	11	24.75
	C	33.33	30	30.00	14	30.00
			32	32.00	17	35.25
			34	34.00	20	40.50
			36	36.00	23	45.75
					26	51.00
					29	56.25
					32	61.50
					35	66.75
					38	72.00

Common Configurations

BASE	WIDTH	DEPTH (IN)	HEIGHT (U)
P960	A	26	38
P960	A	26	32
P960	A	26	26
P960	A	26	14
P960	A	30	38
P960	A	30	32
P960	A	30	26
P960	A	36	38
P960	A	36	32
P960	A	36	26



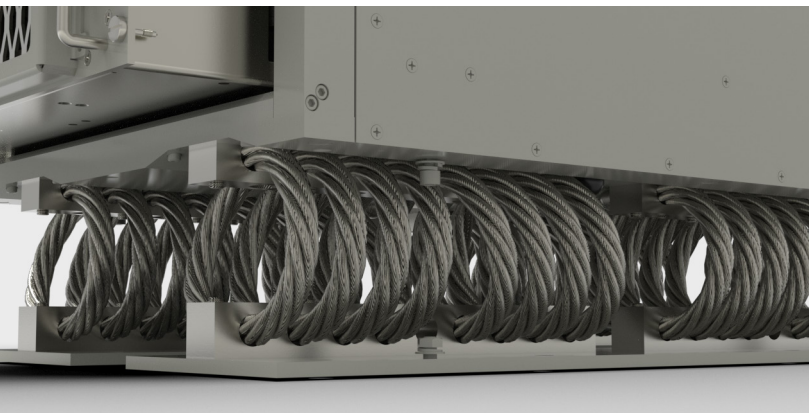
Enclosures

Shielding; MIL-STD-461
Side Panels
Doors
Environmental Protection



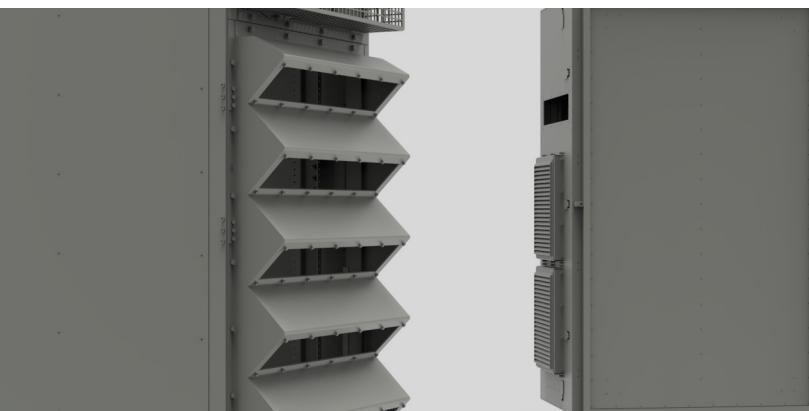
Multi-Bays

Bolt-Together
Maintains Qualifications



Isolation

901 Grade A Qualified
Vibration 167
COTS Products



Accessories

Blower Drawers / Exhaust Provisions / Filters (Air, EMI/RFI)
EMI/RFI-Proof Gasketing
Application Specific Airflow Channeling For Optimal Cooling
PDUs; Remote Controlled & 1U Rugged Form Factor
Internal, Compact (5U), Rack-Mounted, Air Conditioning Systems
Bus Bars & UI-Rated Power Strips
Drip Proof Louvers
Water Cooling System
Equipment Drawers
Slides, Trays, & Cable Management

